



Spout Inserting SI-100 Flex Hybrid

Spout Inserting Machine in three equipment lines:

01. Ultrasonic welding 02. Heat welding 03. Hybrid (heat and ultrasonic welding)





Spout Inserting

SI-100 Flex Hybrid

► Two in One

Depending on your products and materials, choose the most suitable welding process with the same machine. This is made possible by a machine concept that has been thought through down to the smallest detail. The shortest possible changeover time from one welding process to another ensure maximum flexibility.

► Developed for recyclable films

Widmann's SI 100 hybrid spout inserters revolutionize the use of spout inserts and bring their full benefits to bear, especially when processing recyclable materials. It does not matter whether the material is 100% PE or PP, the ultrasonic technology process is virtually predestined for welding these temperature sensitive materials.

► High output

The Widmann SI 100 TOP and SI 100 Flex hybrid spout inserters once again set new standards with cycle rates of up to 100 cycles per minute for ultrasonic welding and up to 90 cycles for heat welding.

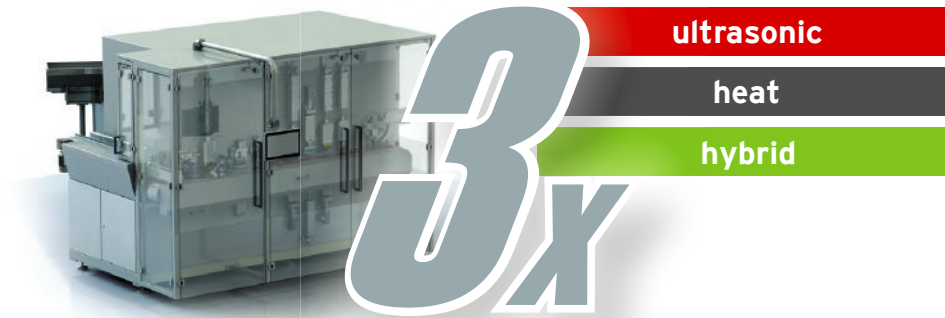
► Best welding seam strength

Unlike heat welding where the spout and the film tend to melt to achieve a good sealing, the ultrasonic technology is a physical process in which the heat is generated thru vibration of the tooling between inner laminate and the spout, therefore it is not needed to apply temperature on the outside to reach welding. This makes ultrasonic welding technology the best option for sealing 100% recyclable materials.

► Flexible in further processing as well

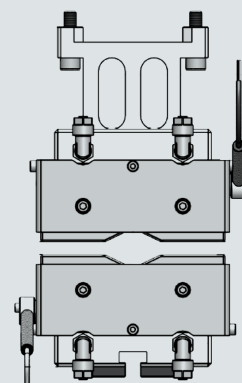
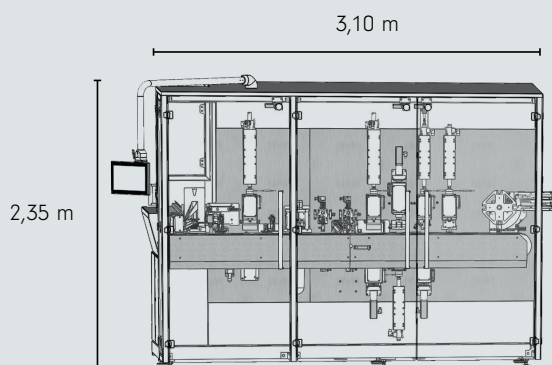
The Widmann SI100 can be connected directly to a filling and sealing machine such as the Widmann LF100, or the spouted bags can be transported on rails in an automatic rail changer, depending on requirements.

Equipment Lines

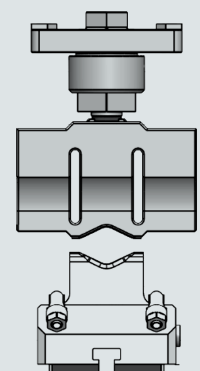


SI100 Data and Equipment

Description	Spec
Machine output:	100 pouches/min ultrasonic - 90 pouches/min heat
Standard pouch formats:	min. 80x100 mm - max. 160x270 mm (special sizes on request)
Spout sizes:	8,5 mm up to 12,5 mm ultrasonic - 6 mm up to 25 mm heat
Standard film thickness:	80µm up to 230µm
Pouch sizes:	topspout and cornerspout
Machine dimensions:	3,10m x 3,60m x 2,35m (L x W x H)



heat welding equipment



ultrasonic welding equipment